

## DEFORMATION OF ERYTHROCYTE IN COUETTE TYPE OF PULSATILE SHEAR FIELD

Shigehiro Hashimoto<sup>1</sup>  
Kogakuin University,  
Tokyo, 1638677, Japan

### ABSTRACT

The experimental methodology has been designed for evaluation of the cyclic deformation of an erythrocyte in the pulsatile shear field *in vitro*. To observe the deformation of the suspended erythrocytes in the Couette type of the shear flow, a rheoscope system has been manufactured. The system consists of a pair of counter-rotating parallel disks and an inverted phase-contrast microscope. The human erythrocytes were suspended in the dextran aqueous solution of high viscosity. The rotating speed varies sinusoidally to make the pulsatile shear field. The deformation of each erythrocyte was measured at the video image of the rheoscope. The experimental results show that the system is available to measure the following behavior of an erythrocyte. The ellipsoidal shape of each erythrocyte varies cyclically to follow the pulsatile cyclic shear field. The delay of deformation phase of each erythrocyte in the cycle is related to the frequency of the cyclic variation of the shear field. The delay is also related to deformability of the erythrocyte.

Keywords: Biomedical Engineering, Shear Flow, Pulsatile Flow, Erythrocyte and Deformation

### NOMENCLATURE

$a$	length of major axis
$b$	length of minor axis
$d$	distance between two parallel walls
$f$	frequency of oscillations of disk
$P$	deformation ratio
$r$	distance between rotational axis and observation point
$R$	radius of disk
$Re$	Reynolds number
$S$	delay ratio
$T$	period
$\Delta T$	delay
$V$	circumferential velocity of disk

$\Delta v$	velocity difference between layers
$\Delta V$	circumferential velocity difference between disks
$\Delta x$	distance between two layers
$\alpha$	Womersley number
$\gamma$	shear rate
$\eta$	viscosity of fluid
$\rho$	density of fluid
$\Delta\omega$	angular velocity difference between disks
$\tau$	shear stress

### 1. INTRODUCTION

An erythrocyte has large flexibility. An erythrocyte passes through micro-circulation, of which the internal diameter is smaller than the diameter of the erythrocyte [1]. After circulation through the blood vessels for days, the erythrocyte is damaged and trapped in the micro-circulation systems *in vivo*.

Deformation of the erythrocyte has been investigated with various methodologies: the mechanism of deformation [2], the shape recovery process [3], fatigue [4], the correlation to the velocity [5], and disease [6]. Deformation of the erythrocyte observed *in vivo* and *in vitro* using various devices: a micro-channel [7], a filter [8], a micro slit [9,10], and a rheoscope [11,12]. An erythrocyte deforms in the shear flow. While an erythrocyte is exposed to the shear flow, it shows tank tread motion at the membrane [11], and ejects contents (hemolysis [12, 13]) through the crevasse of its own membrane, before fragmentation.

The repetitive stresses are applied to the erythrocyte during circulation *in vivo*: in the pulsatile flow, and through the microcirculation. The erythrocyte shows the viscoelastic property, when it recovers to the original shape [3,4].

In the present study, the cyclic deformation of an erythrocyte has been measured microscopically in the pulsatile shear field to detect the deformability of an erythrocyte *in vitro*.

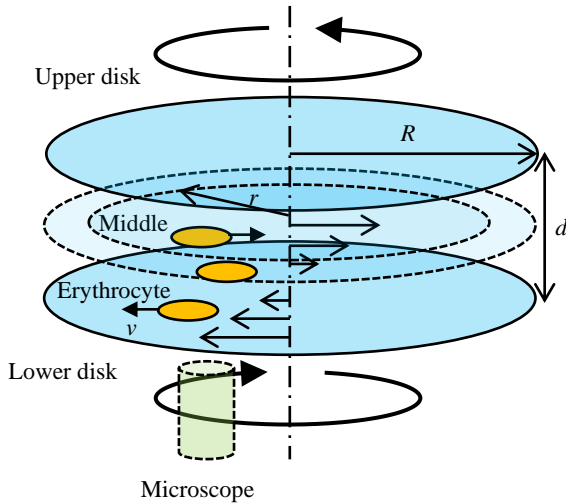
<sup>1</sup> Contact author: shashimoto@cc.kogakuin.ac.jp

## 2. MATERIALS AND METHODS

### 2.1 Rheoscope System

A rheoscope system has been manufactured to observe the deformation of the suspended erythrocytes in the shear flow (Fig. 1). The system consists of a pair of parallel disks and an inverted phase-contrast microscope (IX71, Olympus Co., Ltd., Tokyo). The erythrocytes are sheared in the Couette flow between a pair of counter-rotating parallel disks, which are made of transparent silica glass. The velocity of the middle plane between the counter rotating disks is zero in the shear field of Couette type flow. The velocity of the erythrocyte floating near the middle plane in the fluid is low. The erythrocyte with the low velocity stays within the observation area of the objective lens of the microscope for a long time.

The radius ( $R$ ) and thickness of the disk is 40 mm and 5 mm, respectively. The distance between the rotational axis and the observation point ( $r$ ) is 27 mm. Both disks are supported at their rim by the ball bearing of 100 mm diameter. The edge of the lower disk has a wall to prevent fluid spills. The distance between two disks ( $d$ ) is adjusted between 0.08 mm and 0.12 mm. The distance is confirmed by the volume of the suspension filled between the disks (between 0.3 cm<sup>3</sup> and 0.6 cm<sup>3</sup>), and by the calibrated focus positions of the walls with the microscope.



**FIGURE 1: RHEOSCOPE WITH COUNTER WITH COUNTER ROTATING DISKS.**

The shear rate  $\gamma$  is calculated by the following equation.

$$\gamma = \Delta V / d \quad (1)$$

In Eq. (1),  $d$  is distance between two parallel disks, and  $\Delta V$  is the circumferential velocity difference between the upper and the lower disks. At the observation point with the same distance from the rotational axis, the shear rate  $\gamma$  is constant between two disks regardless of the distance from the surface of the disk in the Couette type of the flow.

The circumferential velocity difference at the observation point is calculated by Eq. (2).

$$\Delta V = r \Delta \omega \quad (2)$$

In Eq. (2),  $r$  is the distance between the rotational axis and the observation point, and  $\Delta \omega$  is the angular velocity difference between the parallel disks.

With a DC (direct current) stepping motor, the angular velocity of each disk ( $\omega < 0.1 \text{ rad s}^{-1}$ ) is controlled in one way. The rotating directions of two disks are counter direction (clockwise and counterclockwise) each other. The absolute values of the angular velocities of two disks are adjusted to the same value each other.

The angular velocity is periodically (period: between 0.67 s and 7 s) varied with the sinusoidal mode in one way. The cyclic fluctuation of the velocity of the disk makes the cyclic fluctuation of the shear rate ( $\gamma$ ) between disks. At the observation point ( $r = 27 \text{ mm}$ ), the shear rate ( $\gamma$ ) is lower than  $6.8 \times 10^{-1} \text{ s}^{-1}$ , calculated with  $\Delta \omega (< 0.2 \text{ rad s}^{-1})$  and with  $d$  (between 0.08 mm and 0.12 mm) in the present experiment.

### 2.2 Erythrocyte Deformation

To apply the high shear stress on each erythrocyte at the low shear rate, erythrocytes were sparsely suspended in a dextran (molecular weight between  $2 \times 10^5$  and  $3 \times 10^5$ ) aqueous solution of high viscosity. The erythrocytes were sheared in the Couette flow between two counter-rotating parallel disks at 298 K. The human erythrocytes collected from the author were used in the experiment.

The shear stress ( $\tau$ ) in the suspension is calculated by Eq. (3).

$$\tau = \eta \gamma \quad (3)$$

In Eq. (3),  $\eta$  is the viscosity of the fluid, and  $\gamma$  is the shear rate between the disks.

Variation is made on the shear stress ( $< 4 \text{ Pa}$ ) with  $\eta$  (between 0.02 Pa s and 0.06 Pa s) and with  $\gamma$  (lower than  $6.8 \times 10^{-1} \text{ s}^{-1}$ ) in the present experiment. The viscosity of the dextran aqueous solution was measured with a cone and plate type of viscometer.

The deformation of cells was observed with the microscope and recorded with a video camera system. The long-focus objective lens is used to observe erythrocytes suspended near the middle plane. The stationary images were captured from the video movie every 0.033 s.

Each erythrocyte deforms from the biconcave shape to the ellipsoid shape in the shear field. On the microscopic image, the outline of each erythrocyte was traced, and the contour of each cell was approximated to ellipsoid. On the ellipsoid, the length of the major axis ( $a$ ), and the minor axis ( $b$ ) were measured (Fig. 3). The ratio of axes is calculated as the deformation ratio ( $P$ ) by Eq. (4).

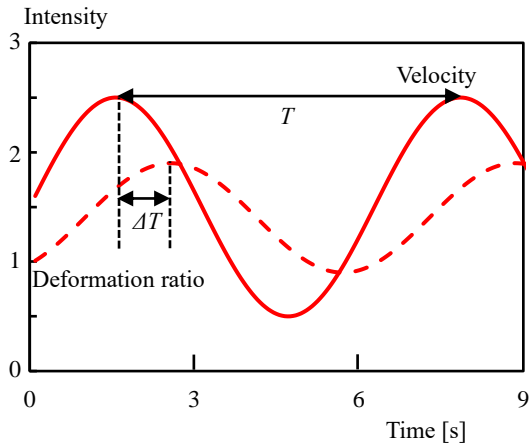
$$P = 1 - b / a \quad (4)$$

At the circle,  $P = 0$ . As the ellipsoid becomes flat,  $P$  approaches to unity. As the shear rate fluctuates periodically, the deformation ratio of each erythrocyte fluctuates periodically. The cyclic fluctuation of the deformation ratio of each erythrocyte was polynomially approximated to the curve by at the time course tracings (Fig. 4).

The velocity of each erythrocyte was calculated by tracing the same erythrocyte by the image every 0.033 s (Fig. 3). The cyclic fluctuation of the velocity of each erythrocyte was polynomially approximated to the curve by at the time course tracings (Fig. 4). The period of the cyclic shear rate ( $T$  [s]) is confirmed by the movement of each erythrocyte. The delay ( $\Delta T$  [s]) (Fig. 2) of the deformation of each erythrocyte is calculated by the phase difference of the approximated cyclic curves between the velocity and the deformation ratio. The delay ratio ( $S$ ) was calculated by Eq. (5).

$$S = \Delta T / T \quad (5)$$

The delay ratio ( $S$ ) is zero, when the cyclic deformation occurs at the timing synchronous to the periodically fluctuating velocity. The delay ratio ( $S$ ) approaches to unity, when the delay of the deformation extends. When the cyclic deformation occurs at the counter phase of the cycle of the shear rate, the delay ratio becomes 0.5.



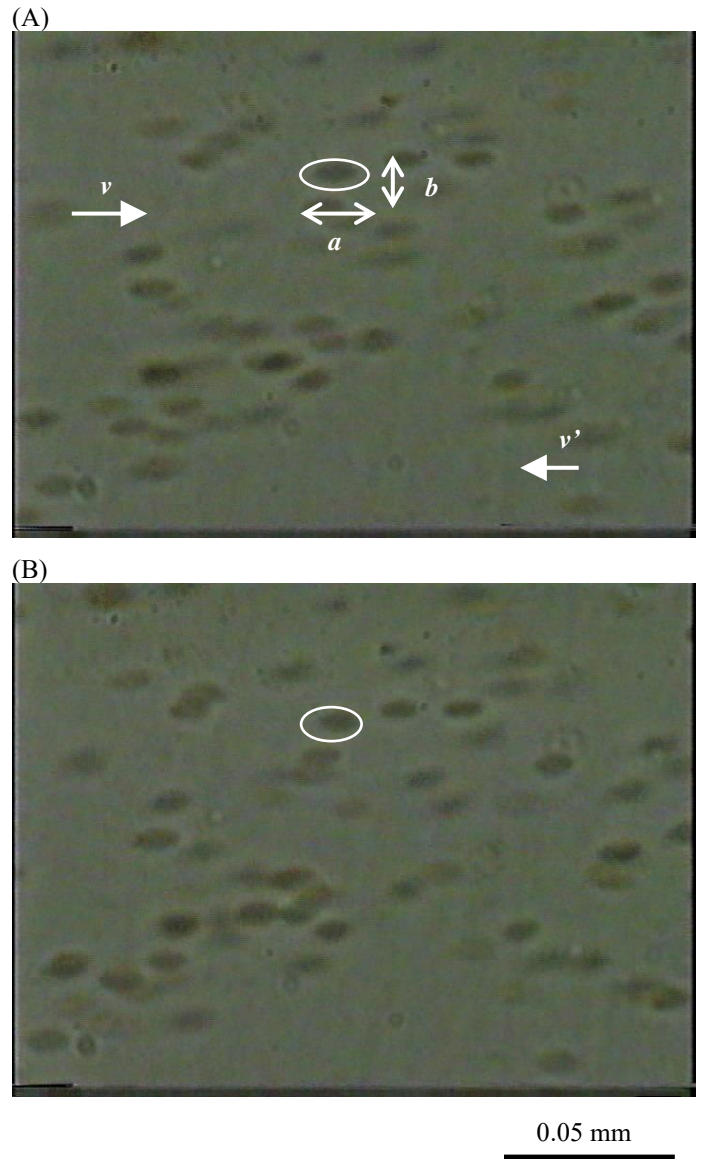
**FIGURE 2:** DEFORMATION RATIO (DOTTED LINE) AND VELOCITY (SOLID LINE): PERIOD ( $T$ ), DELAY ( $\Delta T$ )

### 3. RESULTS

Figure 3 exemplifies the image of erythrocytes in the shear field of the rheoscope system manufactured in the present study. The media moves from left to right in the front layer ( $v$ ), while the media moves from right to left in the rear layer ( $v'$ ). The erythrocytes near the middle layer are able to be observed for a long time within the focused area of the microscope, while the erythrocytes are sheared in the Couette flow. Each erythrocyte deforms from a biconcave to an ellipsoid in the shear stress field. The ellipsoid is elongated, as the shear stress increases. The

direction of the major axis ( $a$ ) of each ellipsoid is parallel to the flow.

Figures 4a-4c exemplify the tracings of the deformation ratio (cross) and the velocity (rhombus) of each erythrocyte. Some erythrocytes deform to the deformation ratio of 0.65 under the shear stress field lower than 4 Pa. Data are scattered in Fig. 4: the deformation ratio between 0.01 and 0.9, and the velocity between  $-40 \mu\text{m/s}$  and  $100 \mu\text{m/s}$ . Data were able to be approximated to the cyclic curve (red lines in Fig. 4). From the approximate curve, the period ( $T$ ) and the delay ( $\Delta T$ ) (Fig. 2) were calculated at each erythrocyte. Each period was in the range between 0.7 s and 7 s. Each delay ratio was in the range between 0.1 and 0.6.

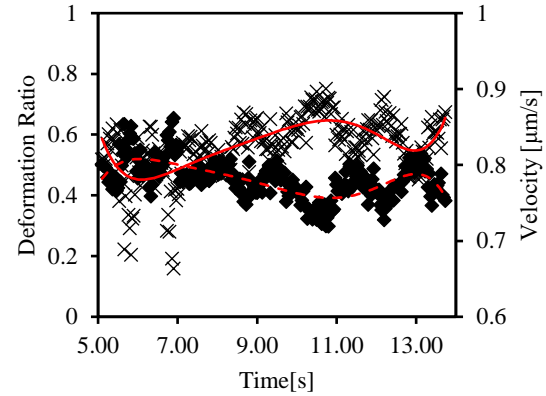


**FIGURE 3:** DEFORMED ERYTHROCYTES IN SHEAR FIELD IN SUCCESSIVE IMAGES: (A) AND (B): VELOCITY OF CELL ( $v$ )

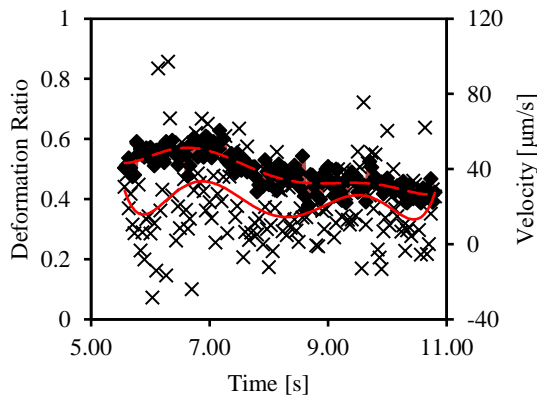
Figure 5 shows the relationship between the delay ratio and the period of cyclic fluctuation of the shear stress on ten erythrocytes collected from ten different cases. The dotted line shows the approximate straight line on data. The delay ratio scatters, which may show the property depends on individuality of each erythrocyte. Some erythrocytes deform within the short delay. Even in the cyclic flow with the long period (with the low frequency) of seven seconds, the deformation of the erythrocyte occurs with a certain ratio of the delay. In the cyclic flow with the period shorter than one second (with the frequency higher than 1 Hz), the deformation of the erythrocyte tends to be delayed.

#### 4. DISCUSSION

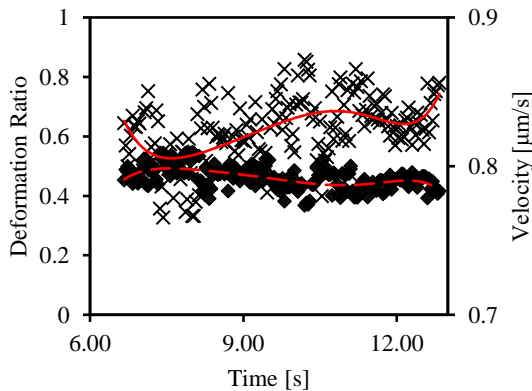
The mechanism of erythrocytes deformability was a target for previous studies [2]. Deformability of erythrocytes can be an index for diagnostics [6]. Both the shear rate and the shear stress govern destruction of erythrocytes in the shear flow [13].



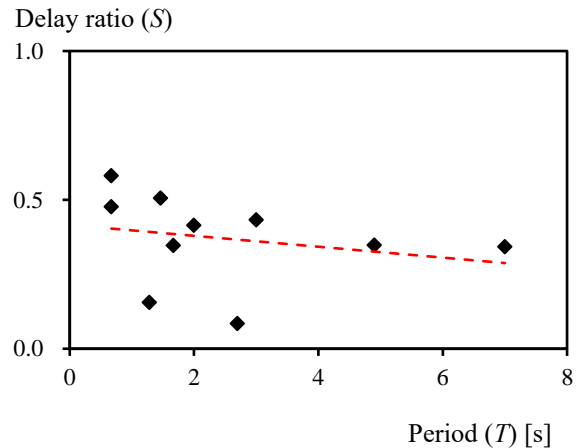
**FIGURE 4c:** TRACINGS OF DEFORMATION RATIO (CROSS) AND VELOCITY (RHOMBUS); APPROXIMATE CURVE (DEFORMATION RATIO (DOTTED LINE) AND VELOCITY (SOLID LINE)); PERIOD 7 s, DELAY RATIO 0.34



**FIGURE 4a:** TRACINGS OF DEFORMATION RATIO (CROSS) AND VELOCITY (RHOMBUS); APPROXIMATE CURVE (DEFORMATION RATIO (DOTTED LINE) AND VELOCITY (SOLID LINE)); PERIOD 2.7 s, DELAY RATIO 0.09



**FIGURE 4b:** TRACINGS OF DEFORMATION RATIO (CROSS) AND VELOCITY (RHOMBUS); APPROXIMATE CURVE (DEFORMATION RATIO (DOTTED LINE) AND VELOCITY (SOLID LINE)); PERIOD 4.9 s, DELAY RATIO 0.35



**FIGURE 5:** RELATIONSHIP BETWEEN DELAY RATIO ( $S$ ) AND PERIOD ( $T$ ): DOTTED LINE, APPROXIMATE STRAIGHT LINE

A micro channel can simulate the microcirculation system [7]. The effects of shear flow on cells were observed in the previous studies. The micro-slit is also useful for observation of deformation of a cell [14].

The cone and plate type instruments are used to make uniform Couette type flow [13]. There are several reasons why the parallel disks type is chosen for the rheoscope in the present study. It is easier to make transparent disk with a flat surface. The distance between two disks is uniform, so that it is easier to maintain the distance between disks constant. Because the hardness of the disks supports the preciseness of the gap distance between two disks, the glass is selected for the material of disks in the present study.

The shear rate between two parallel disks increases in proportion to the distance from the rotational axis. The shear rate varies with less than 5 percent in the observation area of 1 mm square, of which distance from the rotational axis is 27 mm. The

shear rate in the observation area is approximately mean value in the whole volume of the suspension between two disks.

In many cases, each erythrocyte keeps own position in the same plane, so that the velocity of each erythrocyte shows the velocity of the layer, where each erythrocyte is floating. In some cases, on the other hand, erythrocyte moves over the center stationary plane, and moves to the counter direction (Fig. 4a).

In the shear field, the difference between velocities of two layers ( $\Delta v$ ) is calculated by Eq. (6).

$$\Delta v = \gamma \Delta x \quad (6)$$

In Eq. (6),  $\gamma$  is shear rate, and  $\Delta x$  is the distance between two layers:  $\Delta v$  is  $68 \mu\text{m s}^{-1}$  at  $\gamma$  of  $6.8 \times 10 \text{ s}^{-1}$  with  $\Delta x$  of  $1 \mu\text{m}$ . When the erythrocyte moves to the neighbor layer of the shear flow, the velocity of the erythrocyte varies. The variation can cause scattering of the velocity of the erythrocyte at the tracings (Fig. 4).

The dextran solution is applied to the suspension to inhibit turbulence in the flow with increase of viscosity. Reynolds number ( $Re$ ) is a useful index for estimation of the turbulent flow.

$$Re = \rho d V / \eta \quad (7)$$

In Eq. (7),  $\rho$  is density of the fluid,  $d$  is distance between two parallel disks,  $\eta$  is viscosity of the fluid, and  $V$  is the circumferential velocity of the disk.

$Re$  is smaller than 0.02 at  $\rho$  ( $10^3 \text{ kg m}^{-3}$ ),  $\eta$  ( $> 0.02 \text{ Pa s}$ ),  $d$  ( $< 1.2 \times 10^{-4} \text{ m}$ ), and  $V$  ( $< 2.7 \times 10^{-3} \text{ m s}^{-1}$ ) in the present experiment. The number is smaller than unity, so that the turbulent flow hardly occurs. The inertia effect is small around the middle plane, where the velocity is close to zero.

In the present study, the shear rate is periodically varied to simulate the pulsatile flow. Womersley number ( $\alpha$ ) is a useful index for estimation of the viscous effects on the pulsatile flow.

$$\alpha^2 = d^2 (2\pi f \rho / \eta) \quad (8)$$

In Eq. (8),  $d$  is distance between two parallel disks,  $f$  is the frequency of the oscillations of the disk,  $\rho$  is density of the fluid, and  $\eta$  is viscosity of the fluid.

Womersley number ( $\alpha$ ) is smaller than 0.01 ( $d < 1.2 \times 10^{-4} \text{ m}$ ,  $f < 2 \text{ s}^{-1}$ ,  $\rho = 10^3 \text{ kg m}^{-3}$ , and  $\eta > 0.02 \text{ Pa s}$ ) in the present experiment. The number is smaller than unity, so that the inertial effect is very small [15]. The single erythrocyte in the blood is hardly distinguished with the microscope, because the volume ratio of erythrocytes in the blood is higher than 0.3. In the present study, erythrocytes are dispersed in the dextran solution to make them easy to be observed as each single cell. The density of content in a cell increases with aging *in vivo*. In the previous study, the younger cells were collected from 10 percent of the supernatant section after centrifugation, where the older cells were collected from 10 percent of the bottom section after centrifugation [12].

In Fig. 3 in the present study, every cell in the two-dimensional projection shows an ellipse, which relates to the

ellipsoidal shape in the three-dimensional figure. The disk, on the other hand, shows a circle or an ellipse in two-dimensional projection according to the direction. The deformation ratio of 0.65 shows that the erythrocyte is exposed to the shear stress around 3 Pa in Couette flow in the present study. The erythrocyte with high flexibility would make the cyclic deformation with very short delay to follow the periodically fluctuated shear stress. The periodical velocity fluctuation is used to trace the phase of the cyclic shear stress fluctuation in Couette type of the flow in the present study.

## 5. CONCLUSION

Using the rheoscope of a pair of counter rotating disks, the cyclic deformation of an erythrocyte has been measured microscopically in the pulsatile shear field to detect the deformability of an erythrocyte *in vitro*.

## ACKNOWLEDGEMENTS

The author thanks to Mr. Ryo Muto for his assistance of the experiment.

## REFERENCES

- [1] Skalak, R. and Branemark, P.I. "Deformation of Red Blood Cells in Capillaries." *Science* Vol. 164 No. 3880 (1969): pp. 717-719.
- [2] Brody, J.P., Han, Y., Austin, R.H. and Bitensky, M. "Deformation and Flow of Red Blood Cells in a Synthetic Lattice: Evidence for an Active Cytoskeleton." *Biophysical Journal* Vol. 68 (1995): pp. 2224-2232.
- [3] Tajikawa, T., Imamura, Y., Ohno, T., Muranishi, F., Kubota, M. and Ohba, K. "Measurement and Analysis of the Shape Recovery Process of Each Erythrocyte for Estimation of Its Deformability Using the Microchannel Technique: the Influence of the Softness of the Cell Membrane and Viscosity of the Hemoglobin Solution Inside the Cell." *Journal of Biorheology* Vol. 27 No. 1-2 (2013): pp. 1-8.
- [4] Sakuma, S., Kuroda, K., Tsai, C.H.D., Fukui, W., Arai, F. and Kaneko, M. "Red Blood Cell Fatigue Evaluation Based on the Close-encountering Point between Extensibility and Recoverability." *Lab on a Chip* Vol. 14 No. 6 (2014): pp. 1135-1141.
- [5] Tsai, C.H.D., Tanaka, J., Kaneko, M., Horade, M., Ito, H., Taniguchi, T., Ohtani, T. and Sakata, Y. "An On-Chip RBC Deformability Checker Significantly Improves Velocity-Deformation Correlation." *Micromachines* Vol. 7 No. 10, 176 (2016): pp. 1-13.
- [6] Baskurt, O.K., Gelmont, D. and Meiselman, H.J. "Red Blood Cell Deformability in Sepsis." *American Journal of Respiratory and Critical Care Medicine* Vol. 157 No. 2 (1998): pp. 421-427.
- [7] Zheng, Y., Shojaei-Baghini, E., Azad, A., Wang, C. and Sun, Y. "High-throughput Biophysical Measurement of Human Red Blood Cells." *Lab on a Chip* Vol. 12 No. 14 (2012): pp. 2560-2567.

- [8] Ariyoshi, K., Maruyama, T., Odashiro, K., Akashi, K., Fujino, T. and Uyesaka, N. "Impaired Erythrocyte Filterability of Spontaneously Hypertensive Rats: Investigation by Nickel Mesh Filtration Technique." *Circulation Journal* Vol. 74 (2010): pp.129-136.
- [9] Salehyara, S. and Zhu, Q. "Deformation and internal stress in a red blood cell as it is driven through a slit by an incoming flow." *Soft Matter* Vol. 12 No. 13 (2016): pp. 3156-3164.
- [10] Hashimoto, S., Mizoi, A., Hino, H., Noda, K., Kitagawa, K. and Yasuda, T., "Behavior of Cell Passing through Micro Slit." *Proc. 18th World Multi-Conference on Systemics Cybernetics and Informatics* Vol. 2 (2014): pp. 126-131.
- [11] Fischer, T.M., Stohr-Lissen, M. and Schmid-Schonbein, H., "The Red Cell as a Fluid Droplet: Tank Tread-Like Motion of the Human Erythrocyte Membrane in Shear Flow." *Science* Vol. 202 No. 4370 (1978): pp. 894-896.
- [12] Hashimoto, S., "Detect of Sublethal Damage with Cyclic Deformation of Erythrocyte in Shear Flow." *Journal of Systemics Cybernetics and Informatics* Vol. 12 No. 3 (2014): pp. 41-46.
- [13] Hashimoto, S. "Erythrocyte Destruction under Periodically Fluctuating Shear Rate; Comparative Study with Constant Shear Rate." *Artificial Organs* Vol. 13 (1989): pp. 458-463.
- [14] Takahashi, Y., Hashimoto, S., Hino, H. and Azuma, T. "Design of Slit between Micro Cylindrical Pillars for Cell Sorting." *Journal of Systemics Cybernetics and Informatics* Vol. 14 No. 6 (2016): pp. 8-14.
- [15] Caro, C.G., Pedley, T.J., Schroter, R.C. and Seed, W.A. eds., *The Mechanics of the Circulation*, Oxford, Oxford University Press (1978): pp. 57-60.